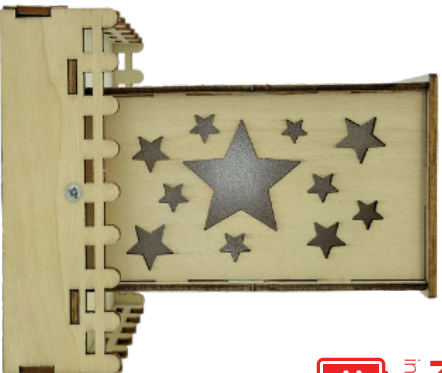




Moonbeam

Starry light lamp

Discover the Joy of a
mechanical Friend



NOT
included

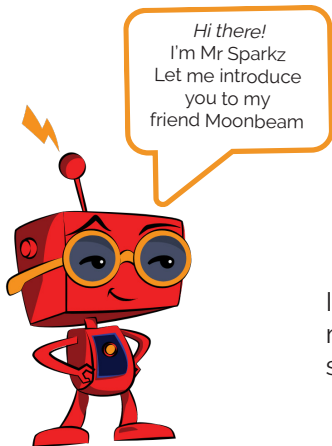


Level



Moonbeam

the Starry light lamp



Hi there!
I'm Mr Sparkz
Let me introduce
you to my
friend Moonbeam

Hey there, little buddy!

I'm Moonbeam, the starry
light lamp.

I'm a starry light lamp and
I'm here to tell you about
me, so get ready for
some magical fun!



Welcome to the world of Moonbeam, a captivating wooden lamp that brings a burst of color and starry charm into any space.

Whether it's indoors or outdoors, this unique lamp adds a touch of elegance and a luxurious visual impact to your room.



How to get prepare:

- Before you start, you need to find a safe and clean place to work.
- If you have any questions or need help, you can ask your parents, a grownup or teacher and they will assist you.

Have fun!



Some things to keep in mind:

- *Be careful:* When you open the package with the parts, be careful not to drop or lose any small parts. They are very important for your model. If you lose a piece, your model might not work!
- *Read and follow:* If you want to make your model easily, you need to read the instructions well and follow the steps.

Let's see what we need and how to prepare:

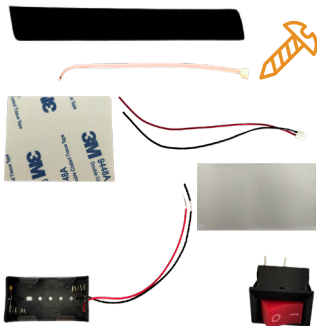


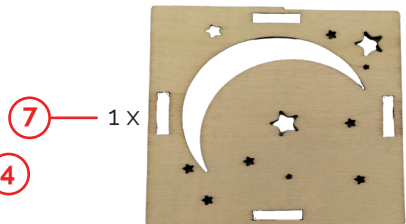
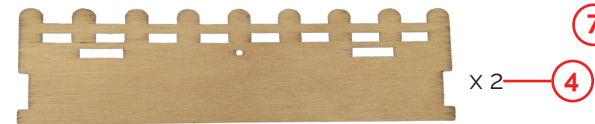
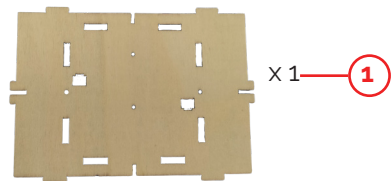
Remember to get 2 x AA batteries for Moonbeam!



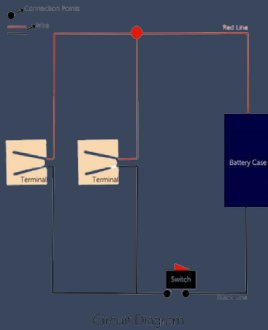
What is in the BOX

- 11 Different pieces of board
- 1 push button
- 1 battery box
- 16 4mm screws
- 1 switch plate
- 1 led module.
- 1 terminal wire
- Cable ties

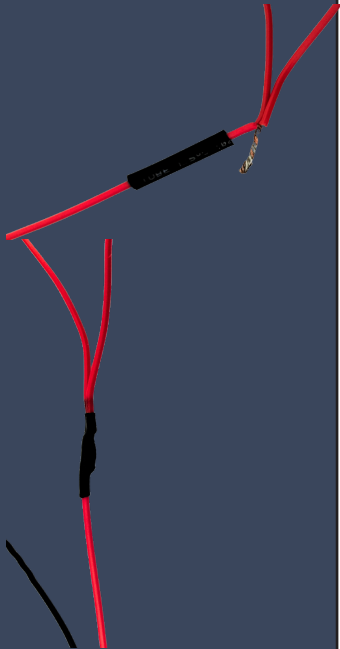




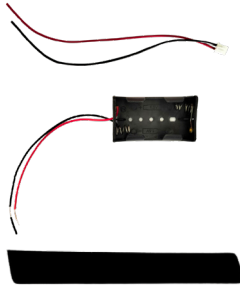
Step 1



Circuit diagram



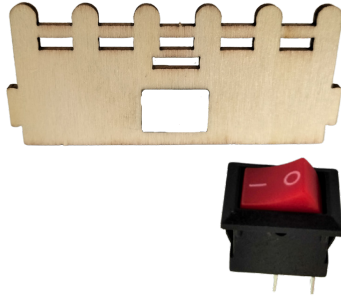
Step 2



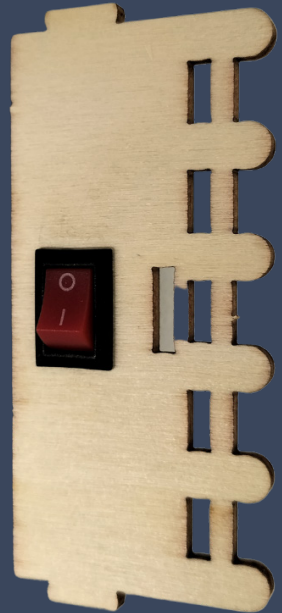
Refer to the circuit wiring diagram in STEP 1, First put the heat shrink tube on the red wire and then connect the wire cores together, then completely cover the wire core with the heat shrink tube, bake the heat shrink tube with a lighter to make it shrink.

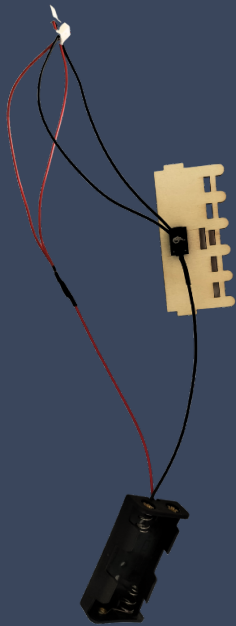
Step 3

2

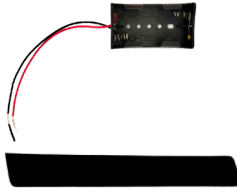


Refer to the picture below, install the ship type switch on plate 2.





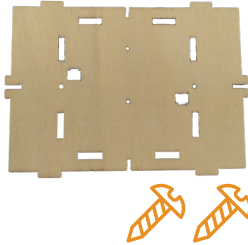
Step 4



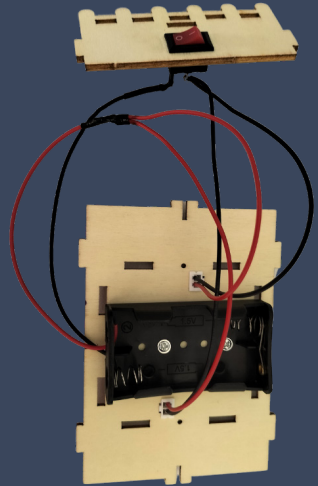
Refer to Step 2 -The wiring diagram to connect the wires. First put the heat shrink tube on the black wire, connect the wire core to the boat switch, then completely cover the heat shrink tube, and bake the heat shrink tube with a lighter to shrink it.

Step 5

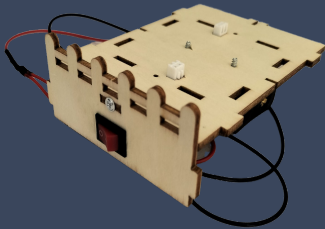
1



Refer to the picture below, use 7mm coarse-grained screws to install the battery box on board 1 and then insert the white terminal wire into the terminal slot of board 1.



Step 6

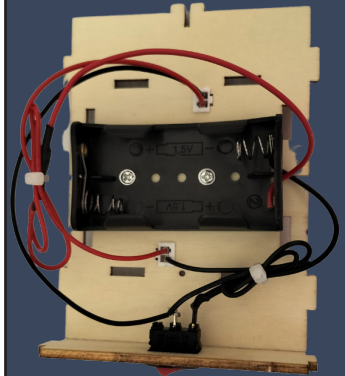


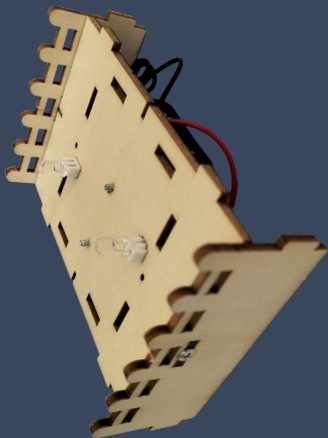
Refer to the picture below and install the 2 board on the 1 board with 7mm screws. The red terminal is connected to the red wire port and the short pin is connected to the white terminal and the black wire port.

Step 7



Use cable ties to organize the wires and trim off the excess cable tie with a scissor. Please be careful when arranging the wiring to avoid breaking the wires.



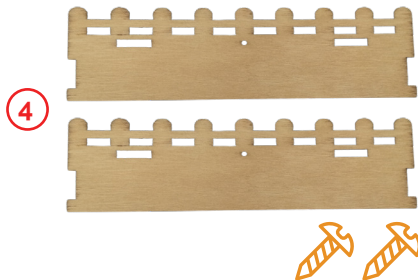


Step 8

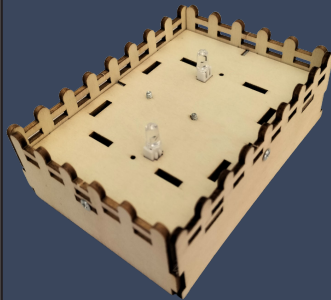


Refer to the picture below, use 7mm screws to install board 3 on board 1. Refer to the picture below, install the LED light on the white terminal line. Connect the long pin to the white terminal. Terminal is connected to the red wire port and the short pin is connected to the white terminal and the black wire port.

Step 9



Use 7mm screws to install the two no. 4 boards on board 1. The lamp holder is completed.





Step 10



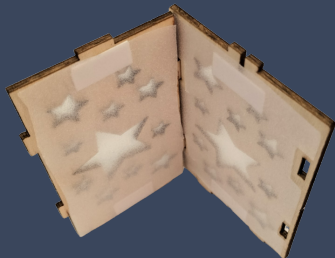
First use scissors to cut the double-sided tape into two pieces and then stick the double-sided tape on the boards and on the plastic as per the picture below.

Step 11



First use scissors to cut out the pieces of light transmitting film. Place the smooth piece onto the board where the double-sided tape is on and stick it onto each other.

Step 10



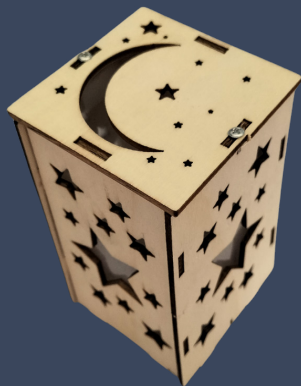
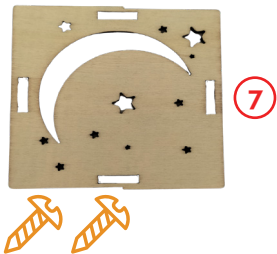
Refer to the picture and install board 5 on board 6. Note that the protruding position in the middle of board 5 and 6 is facing upwards and the side with the light-transmitting film is facing upwards.

Step 11

Refer to the picture below, install board 5 and boards 6 on the other side. Note that the protruding position in the middle of board 5 and 6 is facing upwards and the part with light-transmitting film is facing inside.



Step 10



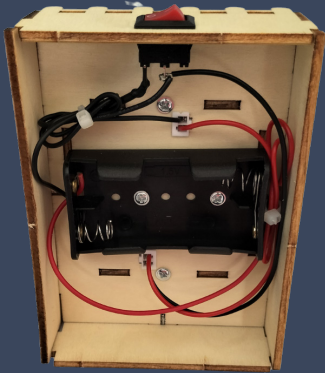
Use 7mm screws to install board 7 and the lampshade is finished.

Step 11

Install the lampshade on the lamp holder. Note that the screw slots on board 6 are aligned with the screw holes on board 1.



Step 11



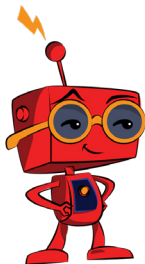
Use 7mm screws to fix the lampshade at the bottom of plate 1. The colorful star lamp is finished. Install the battery on the battery box, press the switch button, and try the effect of the colorful star lamp.

Now you have your very own starry light lamp!

Congratulations, adventurer! There you go. Have fun with your starry light lamp, Moonbeam! Let's watch me glow!

If moonbeam does not work:

- Does the light not light up after installation?
- Check whether the wires are connected correctly. (Please refer to the wiring diagram in step 2.)
- Check if the batteries are in correctly.
- Check whether the pins of the led light are plugged in backward. (The long pins are plugged into the red wire port and the short pins are plugged into the black wire port.)
- Check whether the wire connection is loose. (It is recommended to reconnect the wire.)

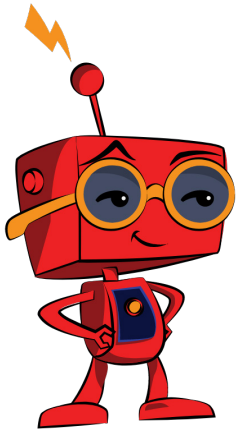
S**Science****T****Technology****E****Engineering****A****Arts****M****Mathematics**

STEAM kits - help kids learn many skills they'll need in a fun and practical way.

Here's how they help:

1. *Hands-On Learning:*
Kids do experiments and projects, making learning fun.
2. *Problem-solving:*
They learn to solve problems by thinking and trying things out.
3. *Creative Thinking:*
Arts and design are part of **STEAM**, so kids get to be creative.
4. *Confidence:*
Completing projects makes kids feel like they accomplished something
5. *Preparation:*
STEAM skills are important for the future, so kids are ready for jobs.

Collect them all

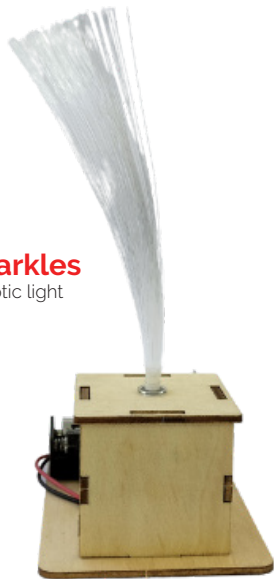


With a bit of imagination you can create your own unique friends. Please share your creations with our community

Please ask your mom / dad / teacher or a grown up to help you to upload your creations to our community page on the website. We would love to see your creations and also share and inspire the little creator in you.



Luna
Intelligent light



Sparkles
Optic light